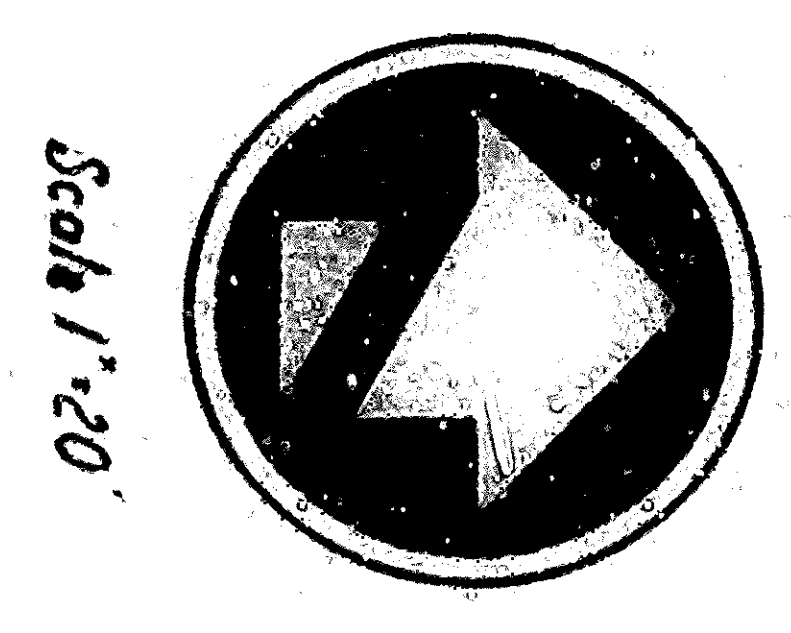
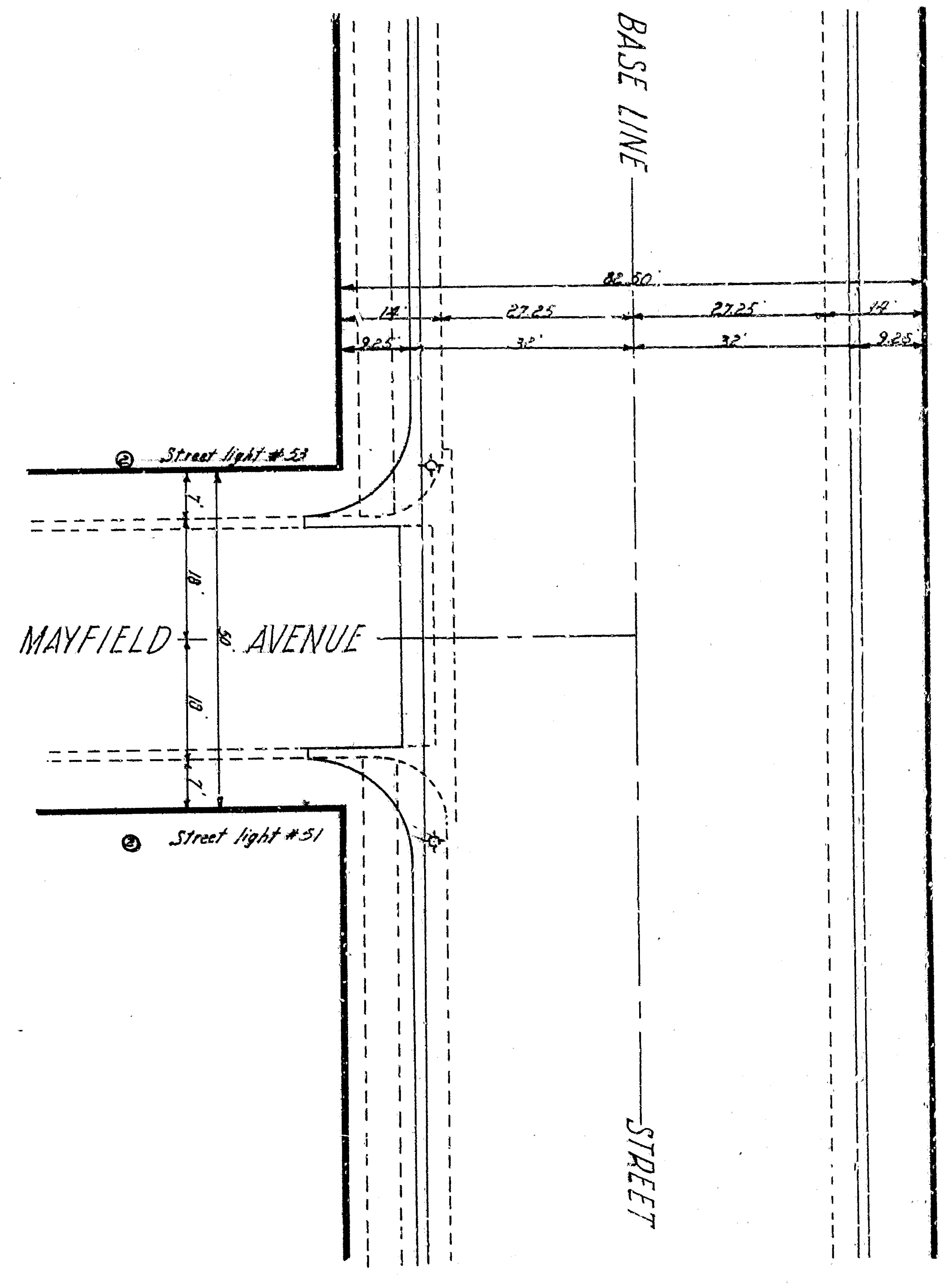
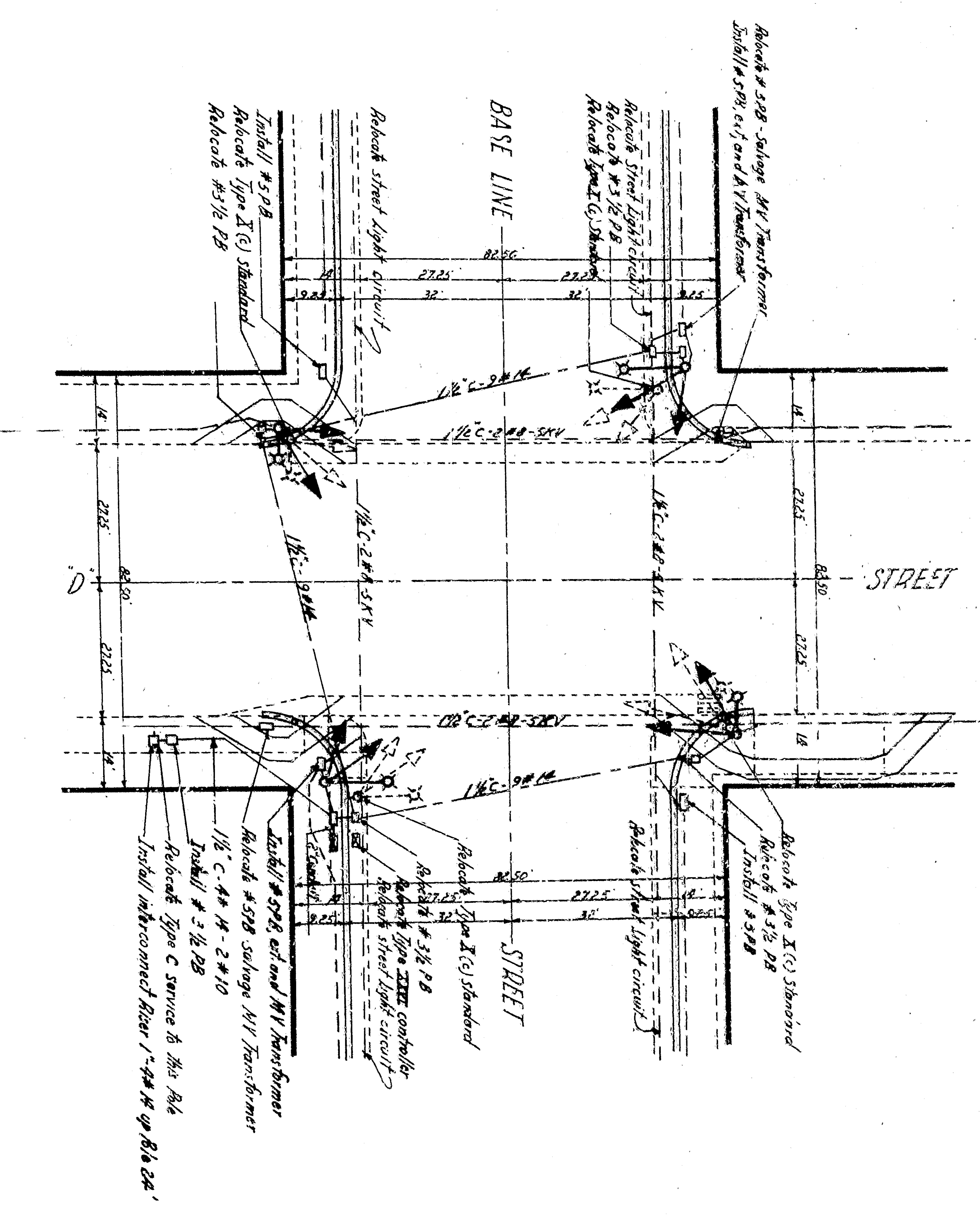
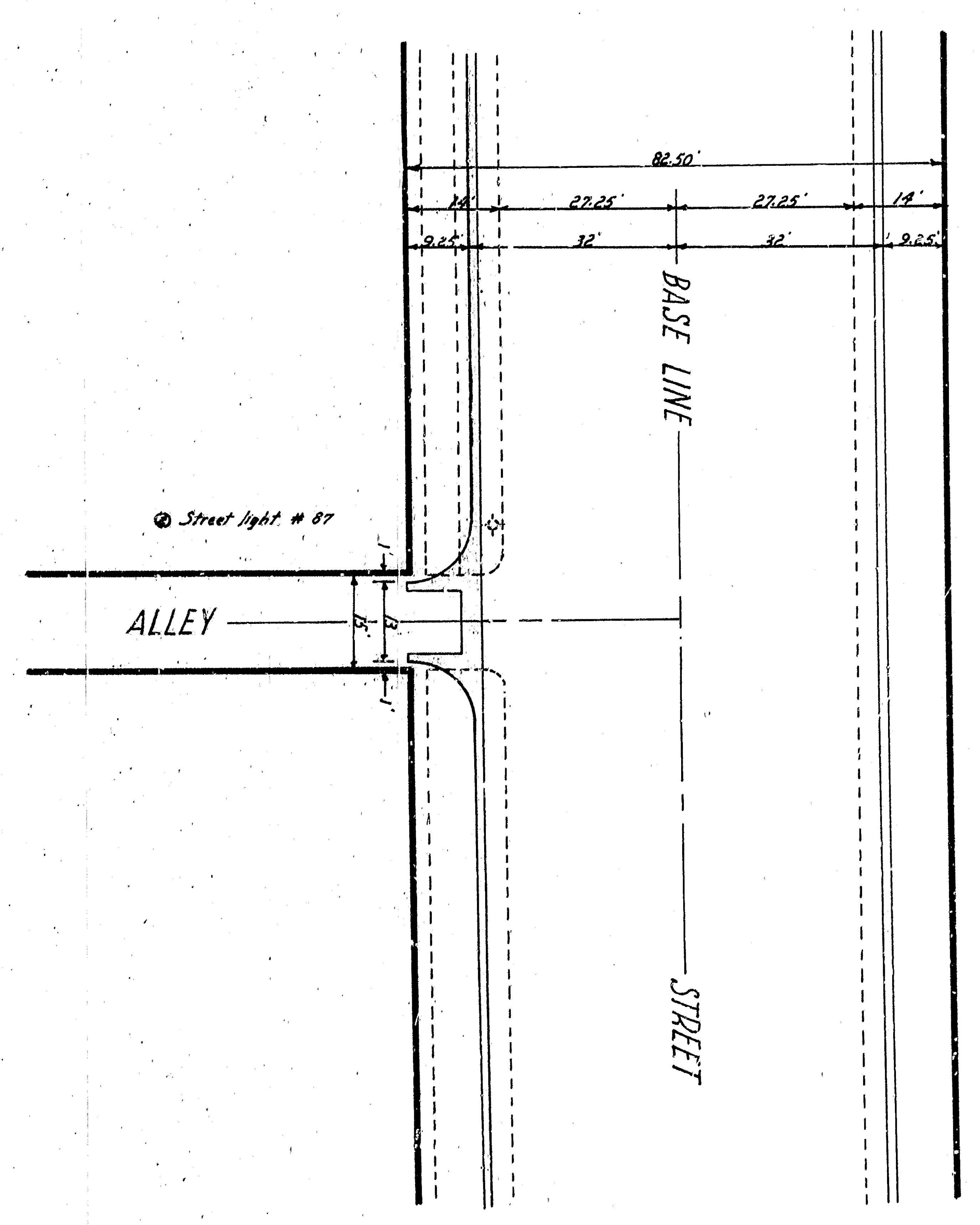
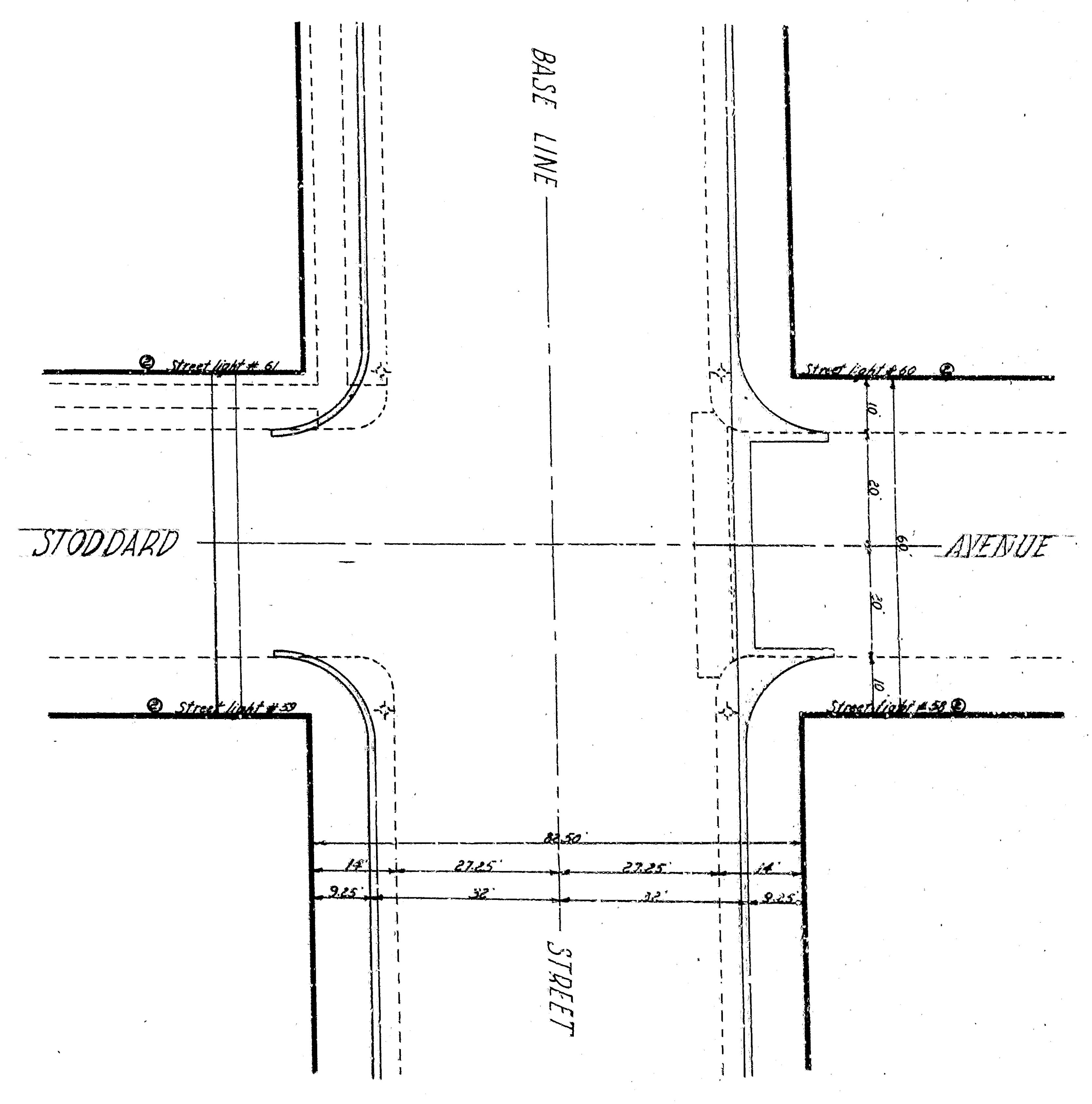
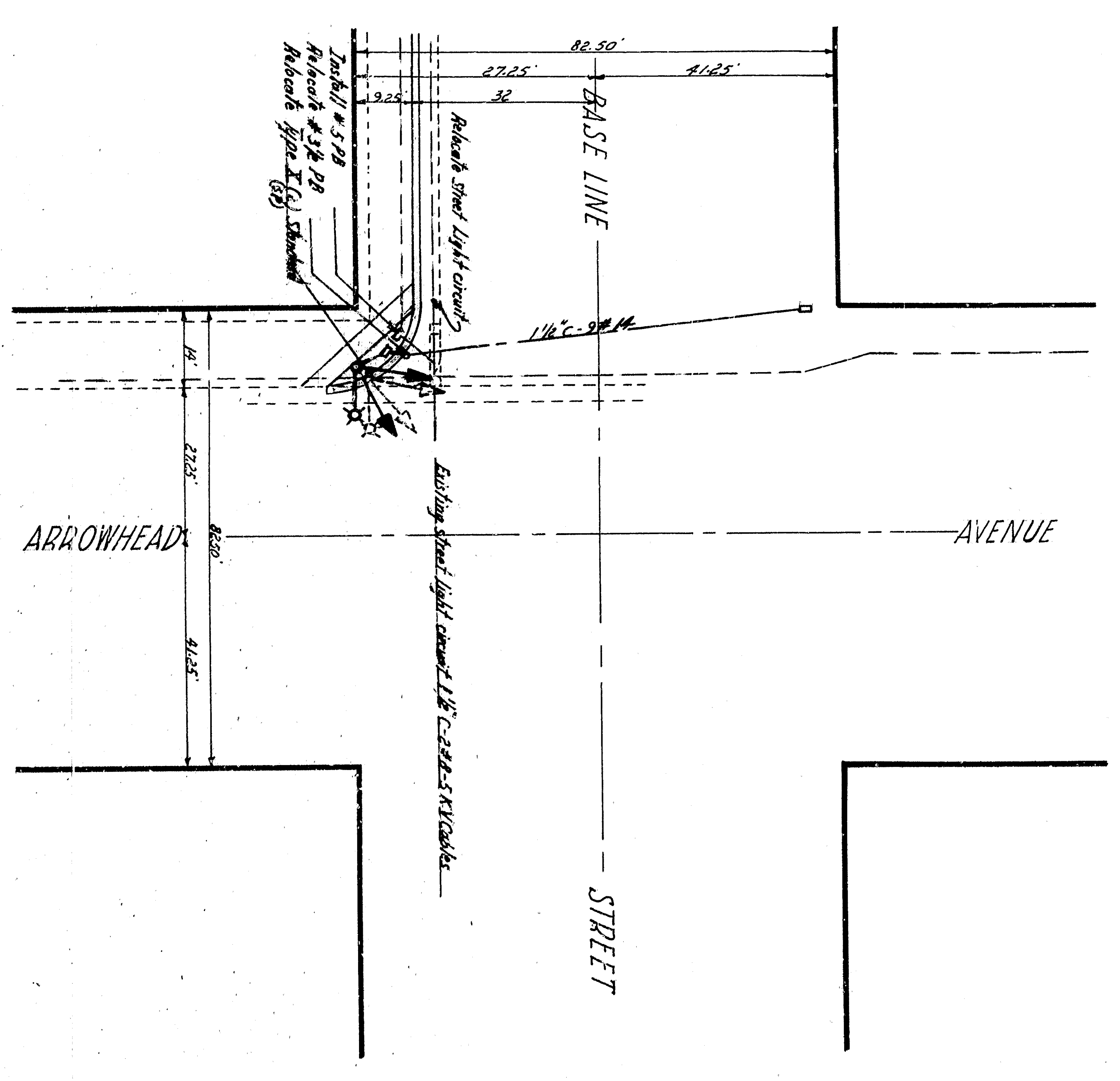
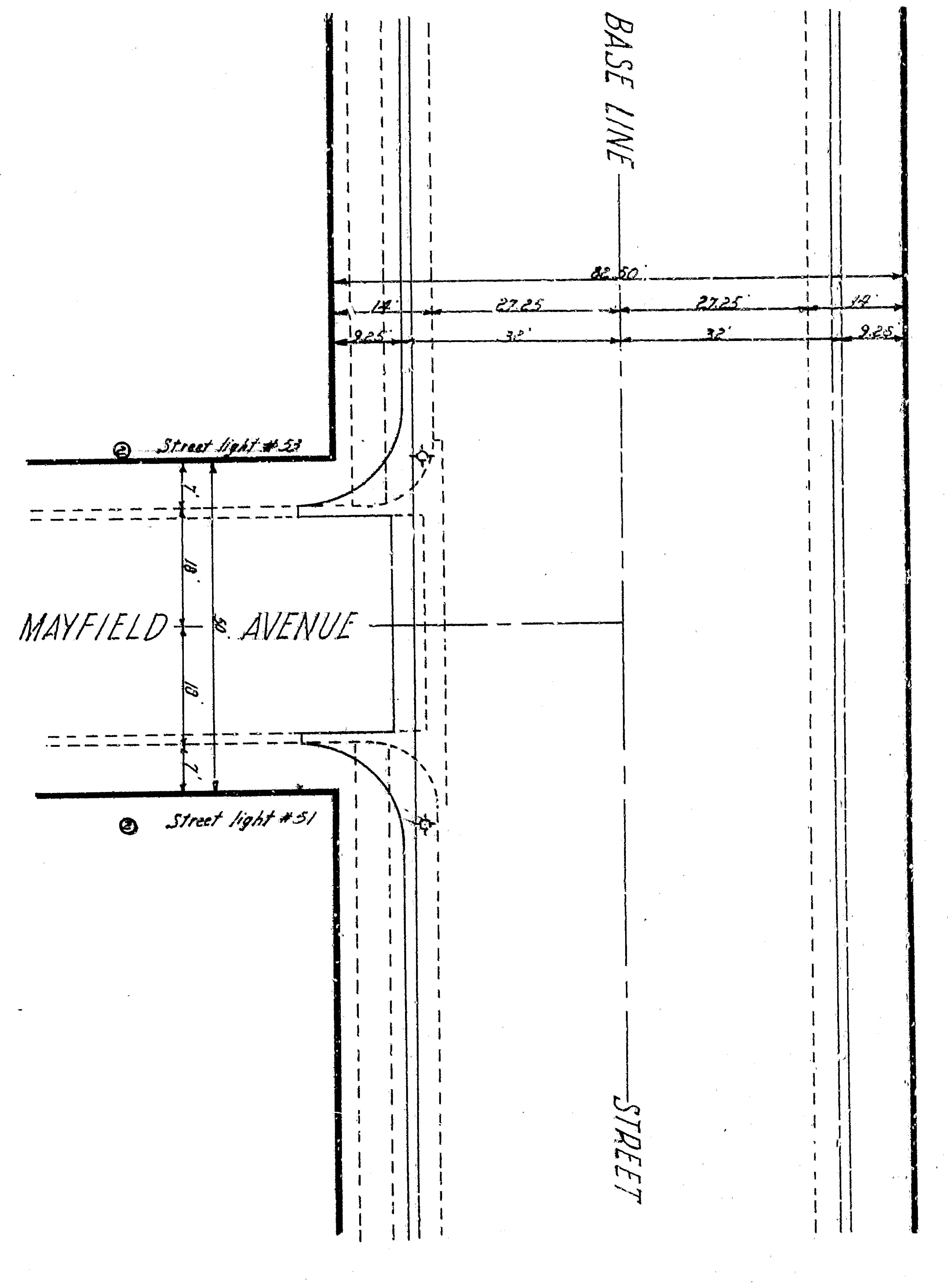
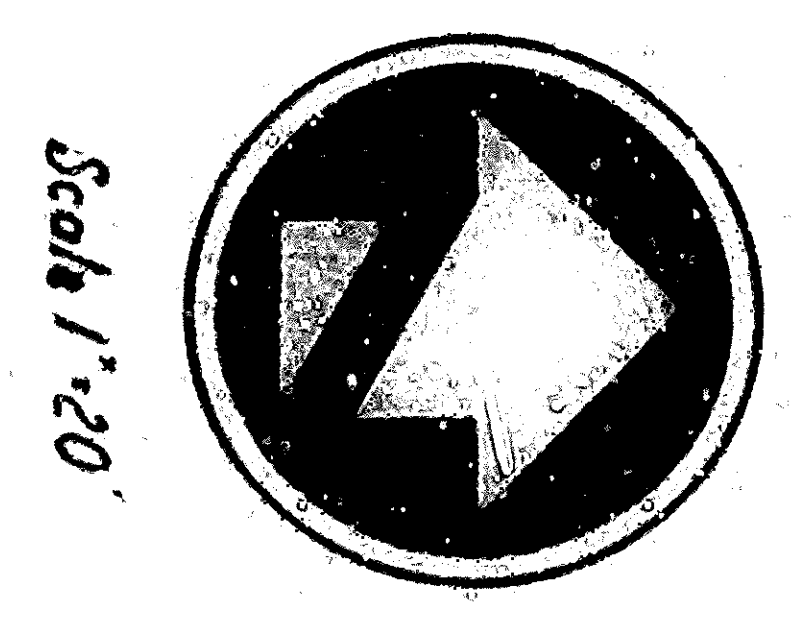
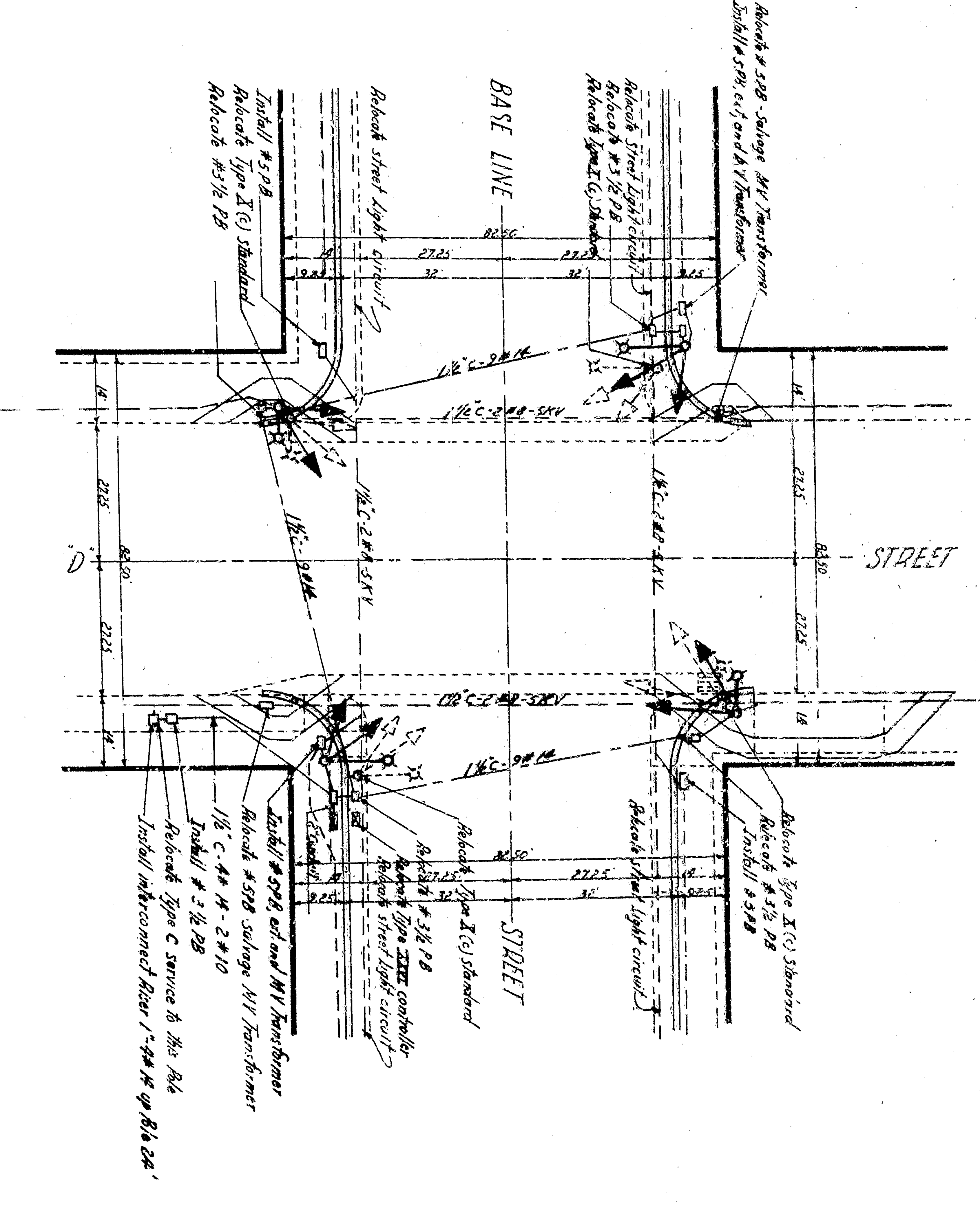
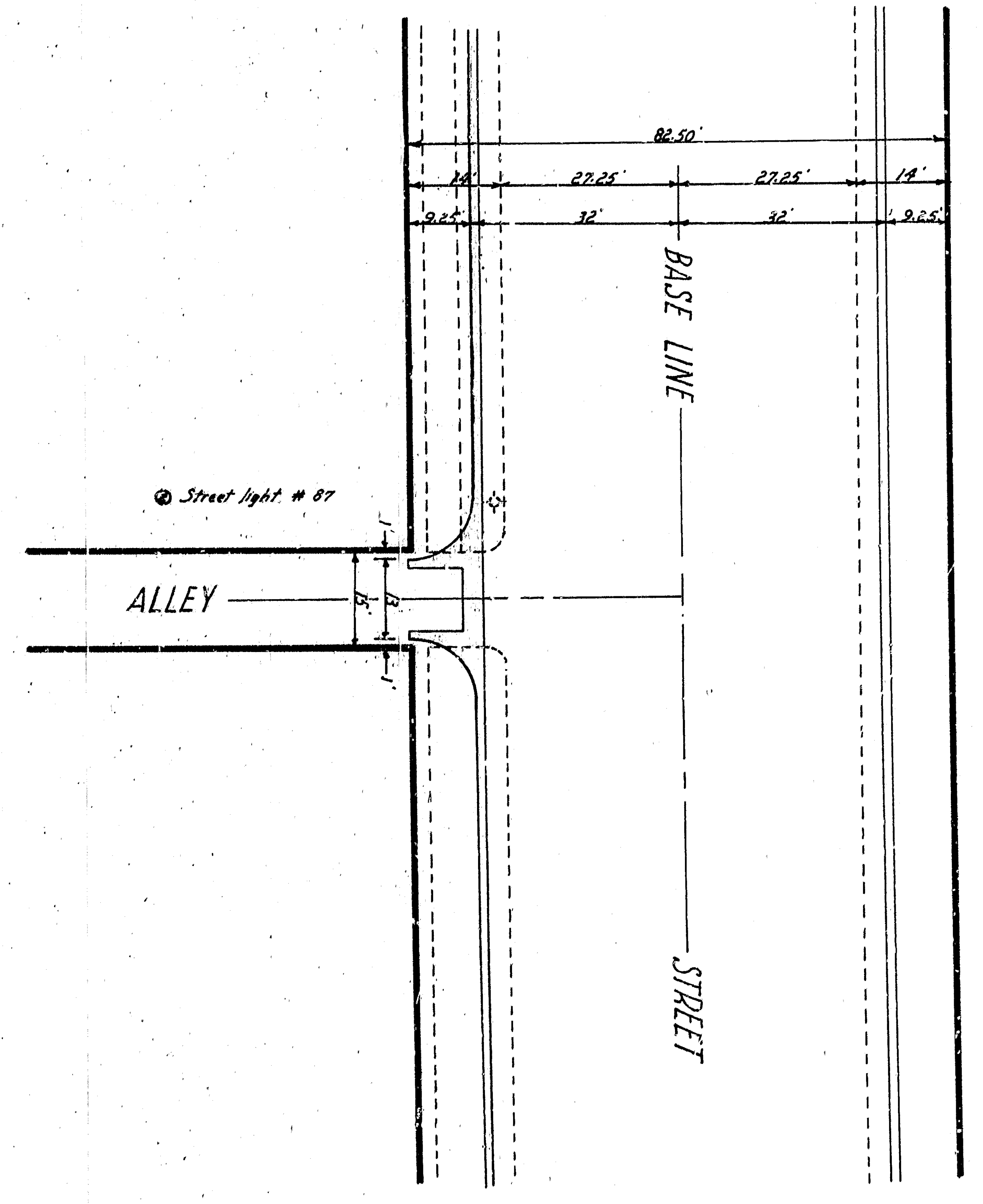
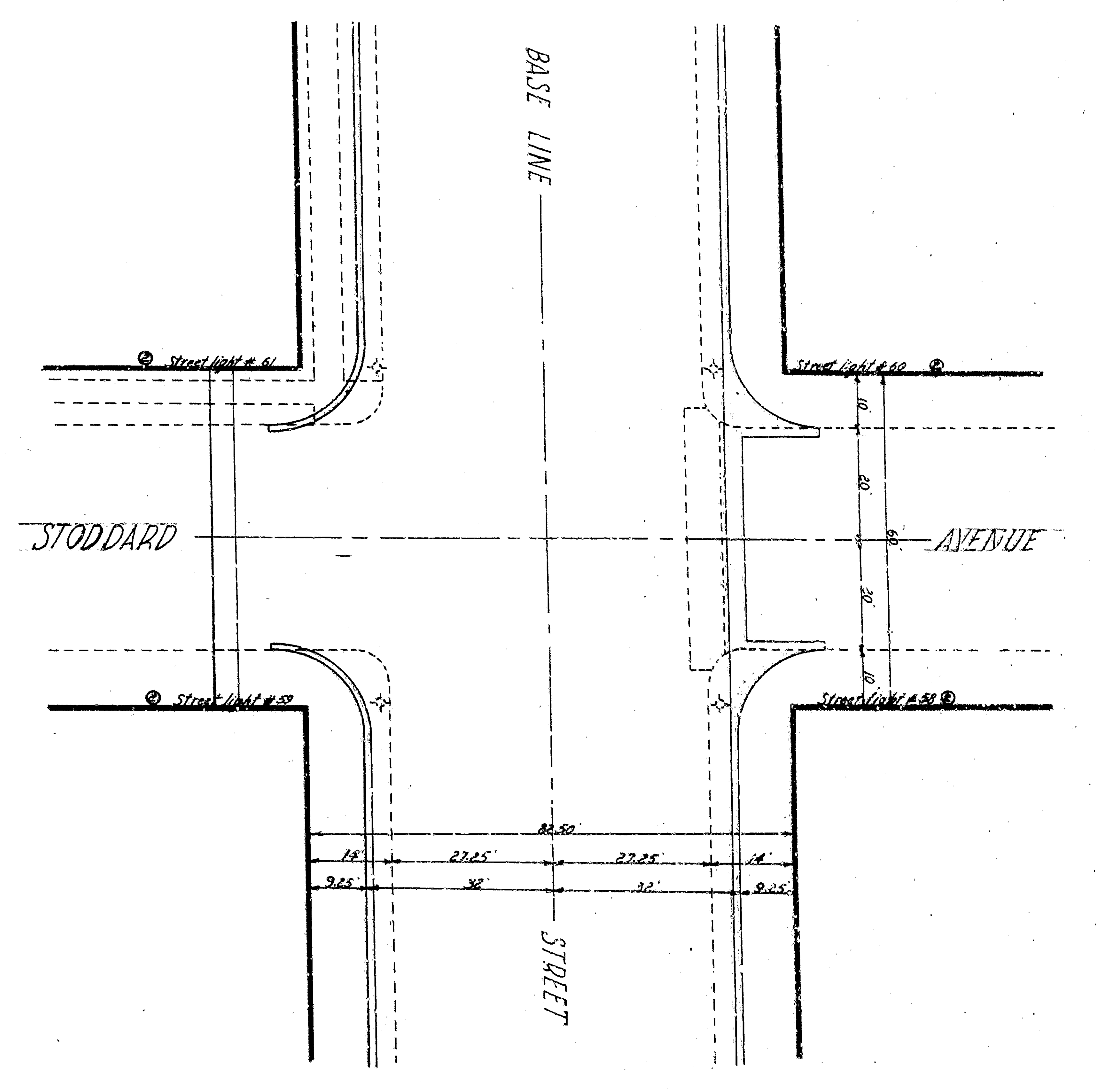
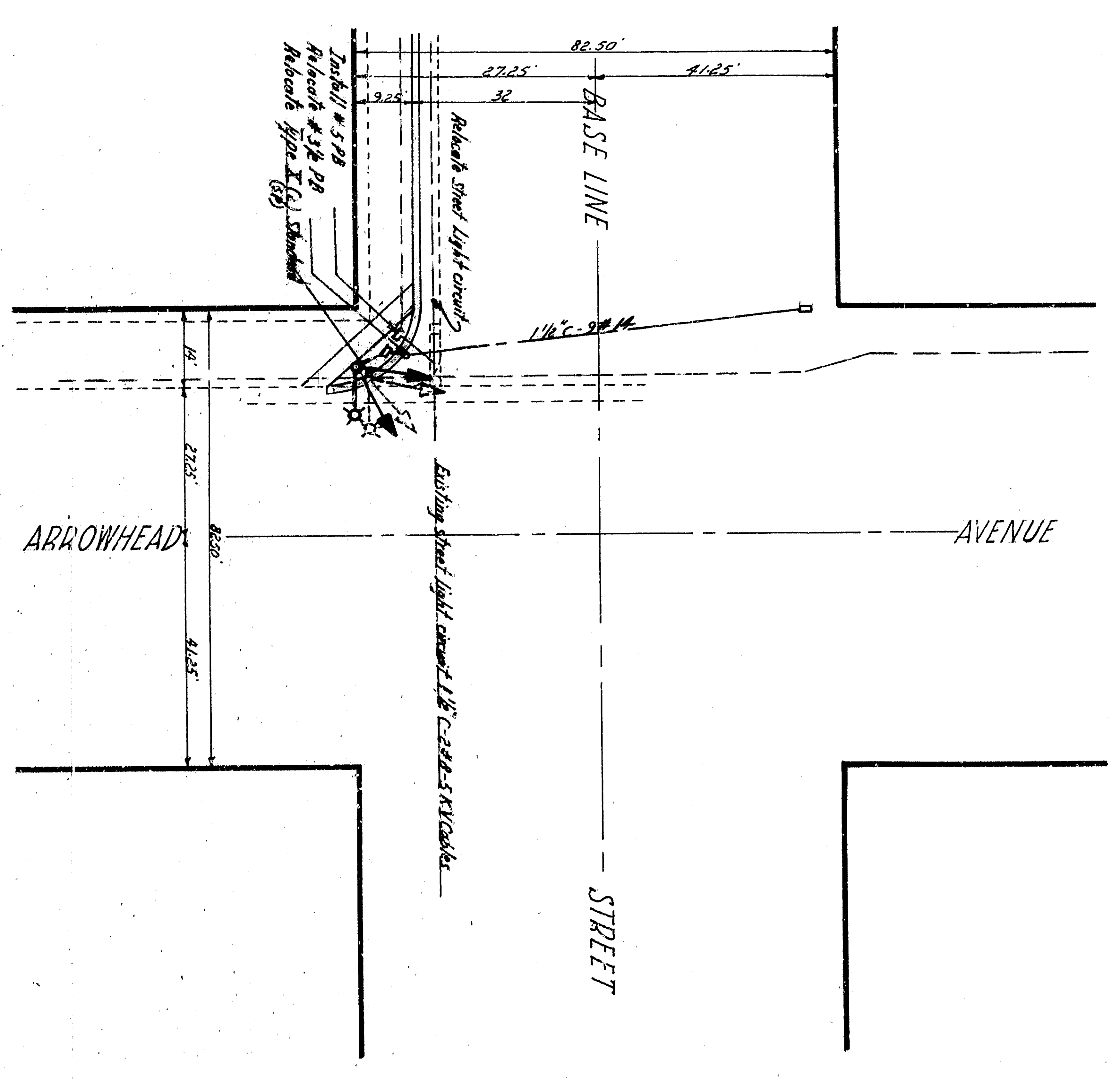


PROJECT: <b>Signal Relocation</b>	DATE: <b>11/21/1982</b>
DRAWING NO.: <b>2168</b>	CITY ENGINEER: <b>Richard S. ...</b>
SHEET # OF SHEETS: <b>24</b>	CHECKED BY: <b>J. ...</b>
RECOMMENDED BY: <b>C. ...</b>	
<b>CITY OF SAN BERNARDINO</b> DEPARTMENT OF ENGINEERING <b>BASE LINE STREET</b> Between H Street and Waterman Avenue Watsonburg	



PROJECT: <b>Signal Relocation</b>	DATE: <b>11/28/82</b>	CITY OF SAN BERNARDINO DEPARTMENT OF ENGINEERING <b>BASE LINE STREET</b> Between H Street and Waterman Avenue Watersburg
DRAWING NO.: <b>2168</b>	CITY ENGINEER: <b>[Signature]</b>	
SHEET # OF: <b>24</b>	CHECKED BY: <b>[Signature]</b>	
	RECOMMENDED BY: <b>[Signature]</b>	



DESIGNED BY	DATE	1942
DRAWN BY	CITY ENGINEER	1179
CHECKED BY	REGISTERED CIVIL ENGINEER	1179
SHEET #	OF	RECOMMENDED SHEETS
24		24

SIGNAL RELOCATION SHEET 2  
DEPARTMENT OF ENGINEERING  
CITY OF SAN BERNARDINO  
BASE LINE STREET  
Between H Street and Waterman Avenue  
Waterman